



# RoHS TEST REPORT

**Product.....:** Cables sequence detection & 10A active equalizer

**Model.....:** 3~24S

**Trademark.....:**   
ENCAP  
BEYOND BATTERIES

**Prepared For.....:** Enercap power industries LLC

Plot 532-235. Siah Suhaib-3 Dubai industrial city Dubai Uae

**Prepared By .....** Guangdong Zhonghan Testing Technology Co., Ltd.

Room 104, Building 1, Yibaolai Industrial Park, Qiaotou Community, Fuhai Street, Bao'an District, Shenzhen, Guangdong, China

Mail:admin@zht-lab.com


Web: <http://www.zht-lab.com>

Tel.:0755-27782934



## RoHS TEST REPORT

<b>Report Number</b> .....:	ZHT-240229024R
<b>Date of issue</b> .....:	Mar. 07, 2024
<b>Total number of pages</b> .....:	15 pages
<b>Testing Laboratory</b> .....:	<b>Guangdong Zhonghan Testing Technology Co., Ltd.</b>
<b>Address</b> .....:	Room 104, Building 1, Yibaolai Industrial Park, Qiaotou Community, Fuhai Street, Bao'an District, Shenzhen, Guangdong, China
<b>Applicant's name</b> .....:	Enercap power industries LLC
<b>Address</b> .....:	Plot 532-235. Siah Suhaib-3 Dubai industrial city Dubai Uae
<b>Test specification:</b>	
<b>Test Requested</b> ..... :	Selected test(s) as requested by client
<b>Test Method</b> .....:	Based on the performed tests on submitted sample(s), the results of Lead, Mercury, Cadmium, Hexavalent chromium, Polybrominated biphenyls (PBBs), Polybrominated diphenyl ethers (PBDEs) and Phthalates such as Bis(2-ethylhexyl) phthalate (DEHP) , Butyl benzyl phthalate (BBP), Dibutyl phthalate (DBP) , and Diisobutyl phthalate (DIBP) comply with the limits as set by RoHS Directive 2011/65/EU Annex II amending Annex (EU)2015/863and amending Annex (EU)2017/2102
<b>Test Result</b> .....:	Please refer to next page(s).

<b>Test item description</b> .....:	Cables sequence detection & 10A active equalizer
<b>Trademark</b> .....:	
<b>Manufacturer</b> .....:	Enercap power industries LLC Plot 532-235. Siah Suhaib-3 Dubai industrial city Dubai Uae
<b>Model/Type reference</b> .....:	3~24S



**Name and address of the testing laboratory:**

Guangdong Zhonghan Testing Technology Co., Ltd.  
Room 104, Building 1, Yibaolai Industrial Park,  
Qiaotou Community, Fuhai Street, Bao'an  
District, Shenzhen, Guangdong, China

**Date of Test**..... : Feb. 29, 2024 - Mar. 07, 2024

**Tested by (name + signature)**..... : Yanny Wu

**Reviewed by (name + signature)**..... : Laney Xie

**Approved by (name + signature)**..... : Levi Lee





<b>Report Record</b>			
<b>Report No.</b>	<b>Issue Date</b>	<b>Description</b>	<b>Approved</b>
ZHT-240229024R	Mar. 07, 2024	Original	valid

**Sample Description**

No.	Name
1	Silver metal (USB port)
2	Silver metal (Type-C port)
3	Black line
4	Black plastic
5	White plastic
6	Orange wire
7	Black metal (screw)
8	Silver metal (screw)
9	Black plastic (shell)
10	Black plastic (cap)
11	Silver metal (screw)
12	White plastic (line clip)
13	Black plastic
14	Silver metal
15	PCB
16	Flat cable
17	Green plastic
18	IC
19	Optocoupler
20	Diode
21	SMD capacitance
22	Inductance
23	Tin



24	<b>SMD resistance</b>
25	<b>Crystal oscillator</b>
26	<b>Triode</b>
27	<b>Tin</b>
28	<b>Silver metal (Type-C port)</b>
29	<b>SMD resistance</b>
30	<b>Electrolytic capacitance</b>
31	<b>Inductance</b>
32	<b>Electrolytic capacitance</b>
33	<b>Buzzer</b>
34	<b>PCB</b>
35	<b>Triode</b>
36	<b>Silver metal</b>

**Test Result(No.3, No.4, No.5, No.6, No.9, No.10, No.12, No.13, No.15, No.16, No.17, No.18, No.19, No.20, No.21, No.22, No.24, No.26, No.29, No.30, No.31, No.32, No.33, No.34, No.35):**

Test Item(s)	Unit	Test Method (Reference)	Result	MDL	Limit
Cadmium(Cd)	mg/kg	IEC 62321-5:2013, ICP-OES	N.D.	2	100
Lead(Pb)	mg/kg	IEC 62321-5:2013, ICP-OES	N.D.	2	1000
Mercury(Hg)	mg/kg	IEC 62321-4:2013+A1:2017, ICP-OES	N.D.	2	1000
Hexavalent Chromium(CrVI)	mg/kg	IEC 62321:2008, IEC62321-7-1:2015, IEC62321-7-2: 2017, UV-Vis	N.D.	2	1000
Sum of PBBs	mg/kg	IEC 62321-6:2015, GC-MS	N.D.	--	1000
Monobromobiphenyl	mg/kg	IEC 62321-6:2015, GC-MS	N.D.	5	--
Dibromobiphenyl	mg/kg	IEC 62321-6:2015, GC-MS	N.D.	5	--
Tribromobiphenyl	mg/kg	IEC 62321-6:2015, GC-MS	N.D.	5	--
Tetrabromobiphenyl	mg/kg	IEC 62321-6:2015, GC-MS	N.D.	5	--
Pentabromobiphenyl	mg/kg	IEC 62321-6:2015, GC-MS	N.D.	5	--
Hexabromobiphenyl	mg/kg	IEC 62321-6:2015, GC-MS	N.D.	5	--
Heptabromobiphenyl	mg/kg	IEC 62321-6:2015, GC-MS	N.D.	5	--
Octabromobiphenyl	mg/kg	IEC 62321-6:2015, GC-MS	N.D.	5	--
Nonabromobiphenyl	mg/kg	IEC 62321-6:2015, GC-MS	N.D.	5	--
Decabromobiphenyl	mg/kg	IEC 62321-6:2015, GC-MS	N.D.	5	--
Sum of PBDEs	mg/kg	IEC 62321-6:2015, GC-MS	N.D.	5	1000
Monobromodiphenyl ether	mg/kg	IEC 62321-6:2015, GC-MS	N.D.	5	--
Dibromodiphenyl ether	mg/kg	IEC 62321-6:2015, GC-MS	N.D.	5	--
Tribromodiphenyl ether	mg/kg	IEC 62321-6:2015, GC-MS	N.D.	5	--
Tetrabromodiphenyl ether	mg/kg	IEC 62321-6:2015, GC-MS	N.D.	5	--
Pentabromodiphenyl ether	mg/kg	IEC 62321-6:2015, GC-MS	N.D.	5	--
Hexabromodiphenyl ether	mg/kg	IEC 62321-6:2015, GC-MS	N.D.	5	--
Heptabromodiphenyl ether	mg/kg	IEC 62321-6:2015, GC-MS	N.D.	5	--
Octabromodiphenyl ether	mg/kg	IEC 62321-6:2015, GC-MS	N.D.	5	--
Nonabromodiphenyl ether	mg/kg	IEC 62321-6:2015, GC-MS	N.D.	5	--
--Decabromodiphenyl ether	mg/kg	IEC 62321-6:2015, GC-MS	N.D.	5	--
Dibutyl Phthalate(DBP)	mg/kg	IEC 62321-8:2017, GC-MS	N.D.	50	1000
Benzylbutyl Phthalate(BBP)	mg/kg	IEC 62321-8:2017, GC-MS	N.D.	50	1000
Di-(2-ethylhexyl) Phthalate(DEHP)	mg/kg	IEC 62321-8:2017, GC-MS	N.D.	50	1000
Diisobutyl phthalate (DIBP)	mg/kg	IEC 62321-8:2017, GC-MS	N.D.	50	1000

**Test Result(No.1, No.2, No.7, No.8, No.11, No.14, No.23, No.25, No.27, No.28, No.36):**

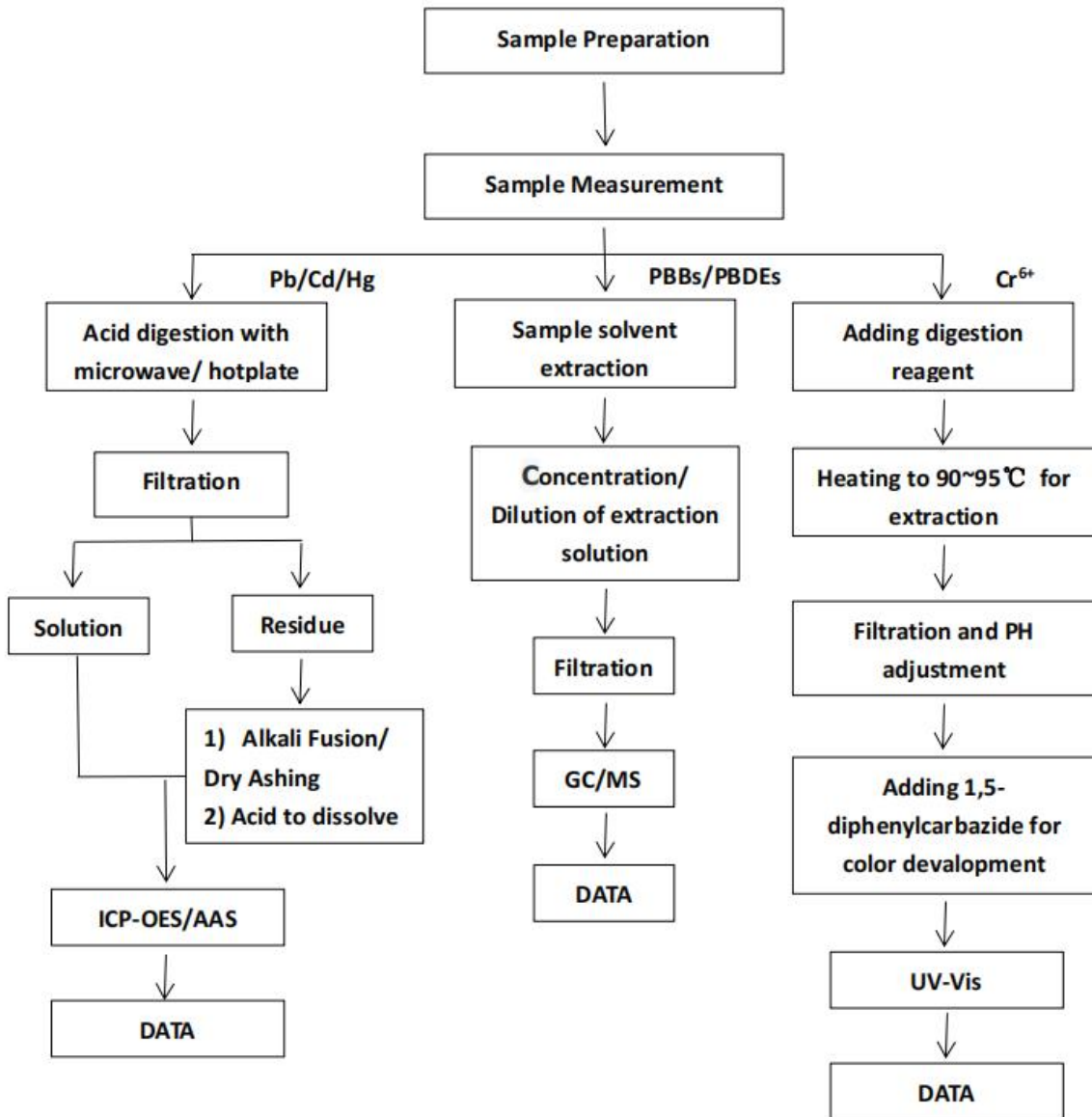
Test Item(s)	Unit	Test Method (Reference)	Result	MDL	Limit
Cadmium(Cd)	mg/kg	IEC 62321-5:2013, ICP-OES	N.D.	2	100
Lead(Pb)	mg/kg	IEC 62321-5:2013, ICP-OES	N.D.	2	1000
Mercury(Hg)	mg/kg	IEC 62321-4:2013+A1:2017, ICP-OES	N.D.	2	1000
Hexavalent Chromium(CrVI)	mg/kg	IEC 62321:2008, IEC62321-7-1:2015, IEC62321-7-2: 2017, UV-Vis	N.D.	2	1000
Sum of PBBs	mg/kg	IEC 62321-6:2015, GC-MS	--	--	--
Monobromobiphenyl	mg/kg	IEC 62321-6:2015, GC-MS	--	--	--
Dibromobiphenyl	mg/kg	IEC 62321-6:2015, GC-MS	--	--	--
Tribromobiphenyl	mg/kg	IEC 62321-6:2015, GC-MS	--	--	--
Tetrabromobiphenyl	mg/kg	IEC 62321-6:2015, GC-MS	--	--	--
Pentabromobiphenyl	mg/kg	IEC 62321-6:2015, GC-MS	--	--	--
Hexabromobiphenyl	mg/kg	IEC 62321-6:2015, GC-MS	--	--	--
Heptabromobiphenyl	mg/kg	IEC 62321-6:2015, GC-MS	--	--	--
Octabromobiphenyl	mg/kg	IEC 62321-6:2015, GC-MS	--	--	--
Nonabromobiphenyl	mg/kg	IEC 62321-6:2015, GC-MS	--	--	--
Decabromobiphenyl	mg/kg	IEC 62321-6:2015, GC-MS	--	--	--
Sum of PBDEs	mg/kg	IEC 62321-6:2015, GC-MS	--	--	--
Monobromodiphenyl ether	mg/kg	IEC 62321-6:2015, GC-MS	--	--	--
Dibromodiphenyl ether	mg/kg	IEC 62321-6:2015, GC-MS	--	--	--
Tribromodiphenyl ether	mg/kg	IEC 62321-6:2015, GC-MS	--	--	--
Tetrabromodiphenyl ether	mg/kg	IEC 62321-6:2015, GC-MS	--	--	--
Pentabromodiphenyl ether	mg/kg	IEC 62321-6:2015, GC-MS	--	--	--
Hexabromodiphenyl ether	mg/kg	IEC 62321-6:2015, GC-MS	--	--	--
Heptabromodiphenyl ether	mg/kg	IEC 62321-6:2015, GC-MS	--	--	--
Octabromodiphenyl ether	mg/kg	IEC 62321-6:2015, GC-MS	--	--	--
Nonabromodiphenyl ether	mg/kg	IEC 62321-6:2015, GC-MS	--	--	--
--Decabromodiphenyl ether	mg/kg	IEC 62321-6:2015, GC-MS	--	--	--
Dibutyl Phthalate(DBP)	mg/kg	IEC 62321-8:2017, GC-MS	--	--	--
Benzylbutyl Phthalate(BBP)	mg/kg	IEC 62321-8:2017, GC-MS	--	--	--
Di-(2-ethylhexyl) Phthalate(DEHP)	mg/kg	IEC 62321-8:2017, GC-MS	--	--	--
Diisobutyl phthalate (DIBP)	mg/kg	IEC 62321-8:2017, GC-MS	--	--	--





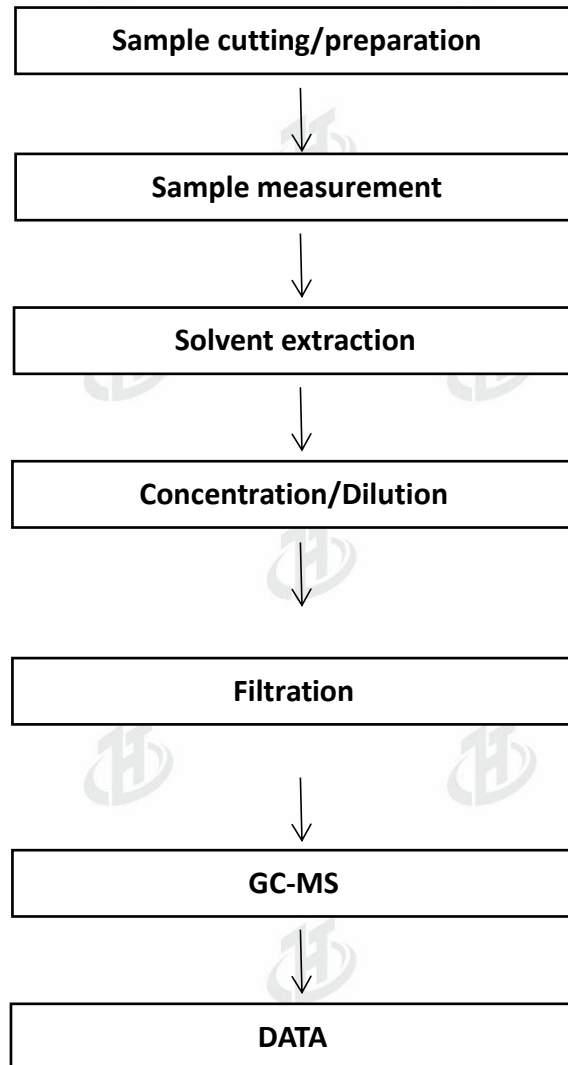
- Note:
- 1. mg/kg= ppm
  - 2. N.D.= No Detection(<MDL)
  - 3. MDL = Method Detection Limit
  - 4. -- = No Testing

**ATTACHMENT: Cd/Pb/Hg/Cr<sup>6+</sup>/PBBs&PBDEs Flow Chart**





**ATTACHMENT: Phthalate Testing Flow Chart**





Attachment : Photo document.



Photo 1

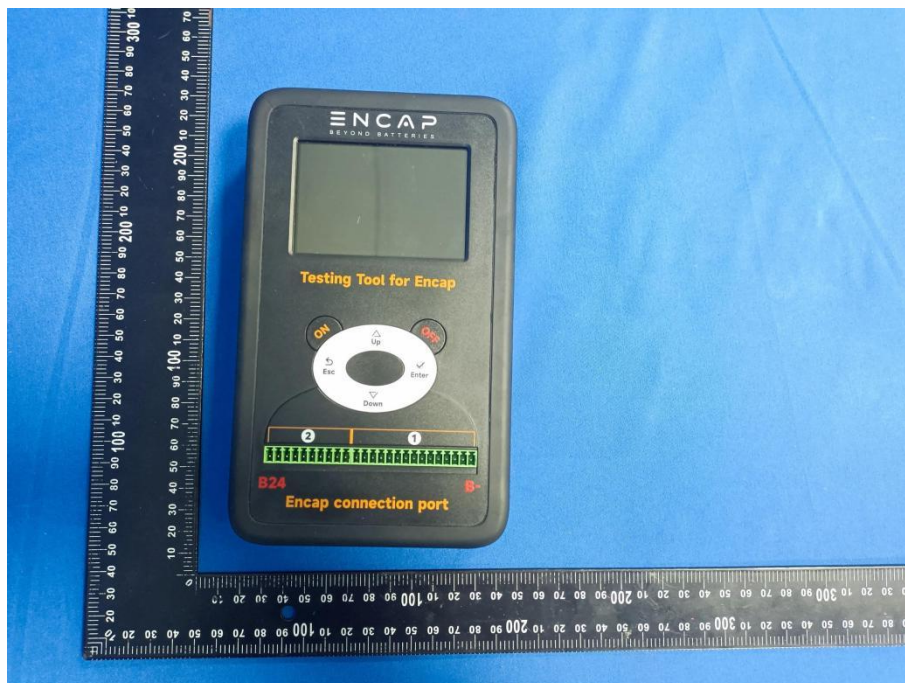


Photo 2

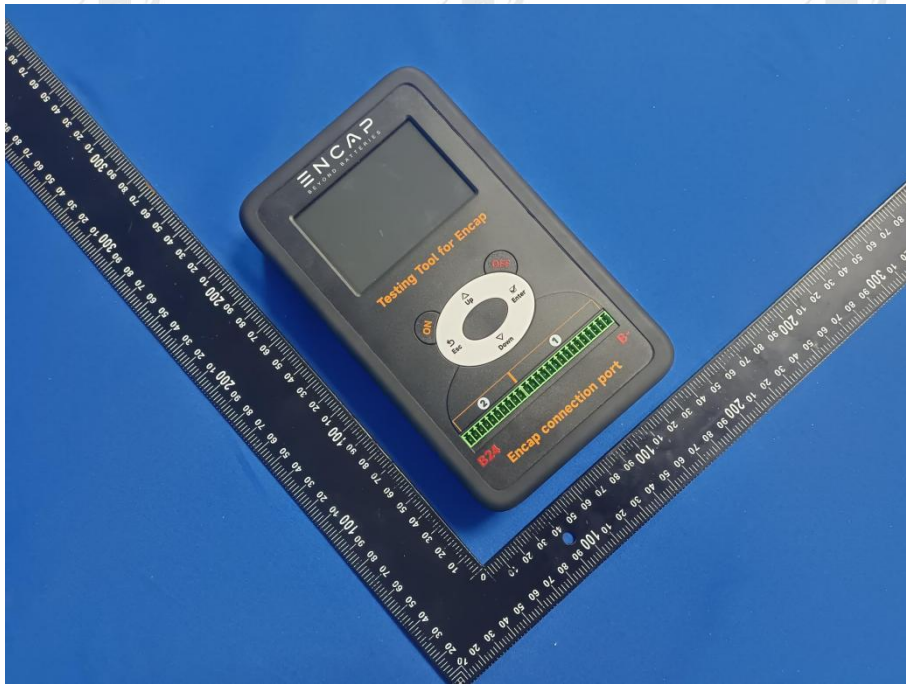


Photo 3



Photo 4



Photo 5

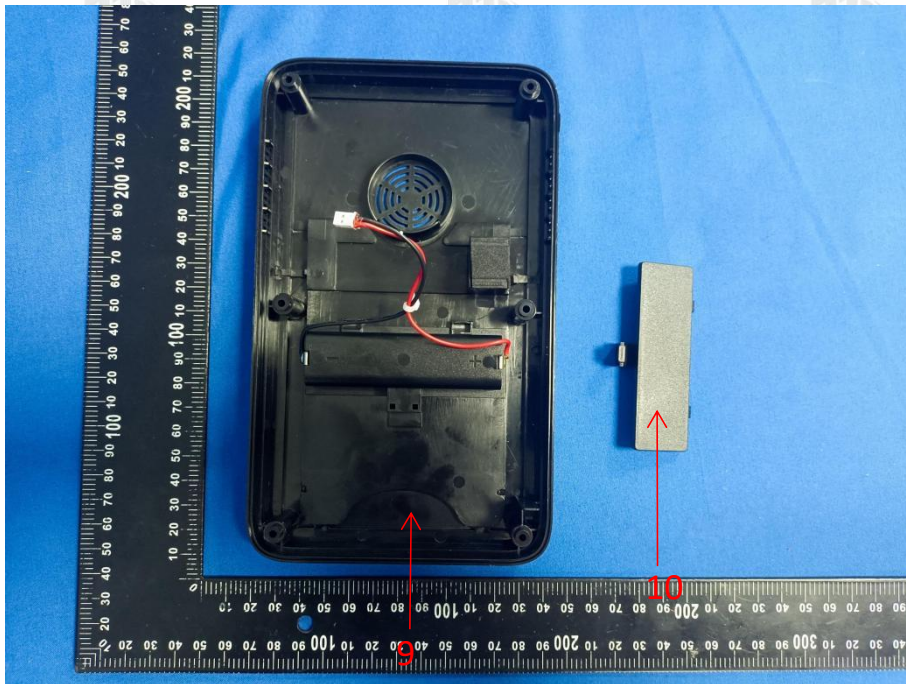


Photo 6



Photo 7

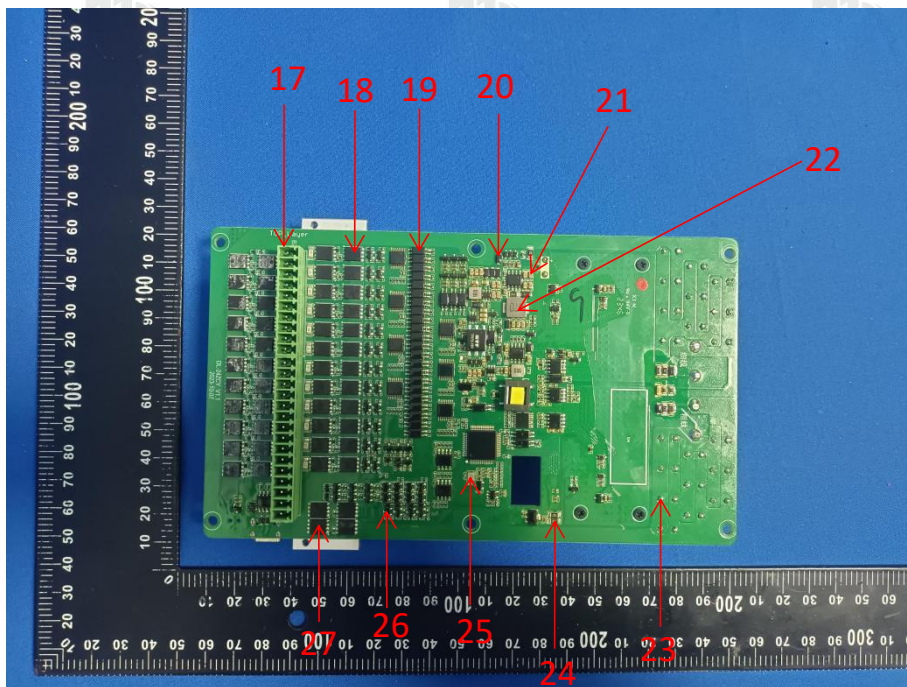


Photo 8

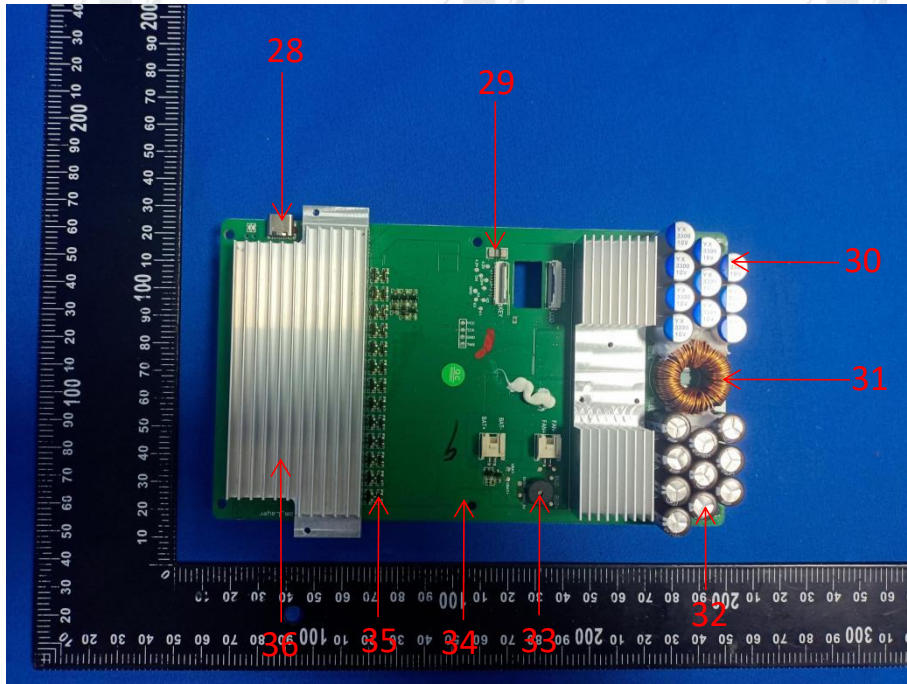


Photo 9

\*\*\*End of report\*\*\*