



# RoHS TEST REPORT

**Product.....:** SAMRT BMS

R32ND

**Model.....:**

R25A,R05A,R05A1,R06A2,R08A2,R25A1,J10J,J16J,R05ND,  
R05ND1,R32ND1,R48ND,R08Q,R05T,R05T1,R06T2,R08T2,  
R17T2,R20T2,R25T,R25T1,R25T4,R05U,R05U1,R32U,R32U1,  
R48U,R05W,R05W1,R32W,R32W1,R48W

**Trademark.....:**



**Prepared For.....:**

**Enercap power industries LLC**

Plot 532-235. Siah Suhaib-3 Dubai industrial city Dubai Uae

**Prepared By .....**

**Guangdong Zhonghan Testing Technology Co., Ltd.**

Room 104, Building 1, Yibaolai Industrial Park, Qiaotou  
Community, Fuhai Street, Bao'an District, Shenzhen, Guangdong,  
China

Mail:admin@zht-lab.com

Web: <http://www.zht-lab.com>

Tel.:0755-27782934



## RoHS TEST REPORT

<b>Report Number</b> .....:	ZHT-240229022R
<b>Date of issue</b> .....:	Mar. 07, 2024
<b>Total number of pages</b> .....:	14 pages
<b>Testing Laboratory</b> .....:	<b>Guangdong Zhonghan Testing Technology Co., Ltd.</b>
<b>Address</b> .....:	Room 104, Building 1, Yibaolai Industrial Park, Qiaotou Community, Fuhai Street, Bao'an District, Shenzhen, Guangdong, China
<b>Applicant's name</b> .....:	Enercap power industries LLC
<b>Address</b> .....:	Plot 532-235. Siah Suhaib-3 Dubai industrial city Dubai Uae
<b>Test specification:</b>	
<b>Test Requested</b> ..... :	Selected test(s) as requested by client
<b>Test Method</b> .....:	Based on the performed tests on submitted sample(s), the results of Lead, Mercury, Cadmium, Hexavalent chromium, Polybrominated biphenyls (PBBs), Polybrominated diphenyl ethers (PBDEs) and Phthalates such as Bis(2-ethylhexyl) phthalate (DEHP) , Butyl benzyl phthalate (BBP), Dibutyl phthalate (DBP) , and Diisobutyl phthalate (DIBP) comply with the limits as set by RoHS Directive 2011/65/EU Annex II amending Annex (EU)2015/863and amending Annex (EU)2017/2102
<b>Test Result</b> .....:	Please refer to next page(s).

<b>Test item description</b> .....:	SAMRT BMS
<b>Trademark</b> .....:	 ENCAP BEYOND BATTERIES
<b>Manufacturer</b> .....:	Enercap power industries LLC Plot 532-235. Siah Suhaib-3 Dubai industrial city Dubai Uae R32ND
<b>Model/Type reference</b> ..... :	R25A,R05A,R05A1,R06A2,R08A2,R25A1,J10J,J16J,R05ND, R05ND1,R32ND1,R48ND,R08Q,R05T,R05T1,R06T2,R08T2, R17T2,R20T2,R25T,R25T1,R25T4,R05U,R05U1,R32U,R32U1, R48U,R05W,R05W1,R32W,R32W1,R48W



**Name and address of the testing laboratory:**

Guangdong Zhonghan Testing Technology Co., Ltd.  
Room 104, Building 1, Yibaolai Industrial Park,  
Qiaotou Community, Fuhai Street, Bao'an  
District, Shenzhen, Guangdong, China

**Date of Test**..... : Feb. 29, 2024 - Mar. 07, 2024

**Tested by (name + signature)**..... : Yanny Wu

**Reviewed by (name + signature)**..... : Laney Xie

**Approved by (name + signature)**..... : Levi Lee





**Report Record**

<b>Report No.</b>	<b>Issue Date</b>	<b>Description</b>	<b>Approved</b>
ZHT-240229022R	Mar. 07, 2024	Original	valid

Remark: All models are same as R32ND except model name only, all tests are carried out on R32ND.



**Sample Description**

No.	Name
1	Red wire
2	White plastic
3	Red metal
4	Black metal (screws)
5	Silver metal
6	Silver metal (screws)
7	Blue plastic
8	Black plastic
9	Silver metal
10	Red plastic
11	Black metal (screws)
12	Red plastic
13	Black plastic
14	Black metal (screws)
15	Orange metal
16	Red metal
17	Silver metal
18	Yellow metal
19	Black metal
20	Black wire
21	Black line
22	Red line
23	Silver metal

**Test Result(No.1, No.2, No.7, No.8, No.10, No.12, No.13, No.20, No.21, No.22):**

Test Item(s)	Unit	Test Method (Reference)	Result	MDL	Limit
Cadmium(Cd)	mg/kg	IEC 62321-5:2013, ICP-OES	N.D.	2	100
Lead(Pb)	mg/kg	IEC 62321-5:2013, ICP-OES	N.D.	2	1000
Mercury(Hg)	mg/kg	IEC 62321-4:2013+A1:2017, ICP-OES	N.D.	2	1000
Hexavalent Chromium(CrVI)	mg/kg	IEC 62321:2008, IEC62321-7-1:2015, IEC62321-7-2: 2017, UV-Vis	N.D.	2	1000
Sum of PBBs	mg/kg	IEC 62321-6:2015, GC-MS	N.D.	--	1000
Monobromobiphenyl	mg/kg	IEC 62321-6:2015, GC-MS	N.D.	5	--
Dibromobiphenyl	mg/kg	IEC 62321-6:2015, GC-MS	N.D.	5	--
Tribromobiphenyl	mg/kg	IEC 62321-6:2015, GC-MS	N.D.	5	--
Tetrabromobiphenyl	mg/kg	IEC 62321-6:2015, GC-MS	N.D.	5	--
Pentabromobiphenyl	mg/kg	IEC 62321-6:2015, GC-MS	N.D.	5	--
Hexabromobiphenyl	mg/kg	IEC 62321-6:2015, GC-MS	N.D.	5	--
Heptabromobiphenyl	mg/kg	IEC 62321-6:2015, GC-MS	N.D.	5	--
Octabromobiphenyl	mg/kg	IEC 62321-6:2015, GC-MS	N.D.	5	--
Nonabromobiphenyl	mg/kg	IEC 62321-6:2015, GC-MS	N.D.	5	--
Decabromobiphenyl	mg/kg	IEC 62321-6:2015, GC-MS	N.D.	5	--
Sum of PBDEs	mg/kg	IEC 62321-6:2015, GC-MS	N.D.	5	1000
Monobromodiphenyl ether	mg/kg	IEC 62321-6:2015, GC-MS	N.D.	5	--
Dibromodiphenyl ether	mg/kg	IEC 62321-6:2015, GC-MS	N.D.	5	--
Tribromodiphenyl ether	mg/kg	IEC 62321-6:2015, GC-MS	N.D.	5	--
Tetrabromodiphenyl ether	mg/kg	IEC 62321-6:2015, GC-MS	N.D.	5	--
Pentabromodiphenyl ether	mg/kg	IEC 62321-6:2015, GC-MS	N.D.	5	--
Hexabromodiphenyl ether	mg/kg	IEC 62321-6:2015, GC-MS	N.D.	5	--
Heptabromodiphenyl ether	mg/kg	IEC 62321-6:2015, GC-MS	N.D.	5	--
Octabromodiphenyl ether	mg/kg	IEC 62321-6:2015, GC-MS	N.D.	5	--
Nonabromodiphenyl ether	mg/kg	IEC 62321-6:2015, GC-MS	N.D.	5	--
--Decabromodiphenyl ether	mg/kg	IEC 62321-6:2015, GC-MS	N.D.	5	--
Dibutyl Phthalate(DBP)	mg/kg	IEC 62321-8:2017, GC-MS	N.D.	50	1000
Benzylbutyl Phthalate(BBP)	mg/kg	IEC 62321-8:2017, GC-MS	N.D.	50	1000
Di-(2-ethylhexyl) Phthalate(DEHP)	mg/kg	IEC 62321-8:2017, GC-MS	N.D.	50	1000
Diisobutyl phthalate (DIBP)	mg/kg	IEC 62321-8:2017, GC-MS	N.D.	50	1000



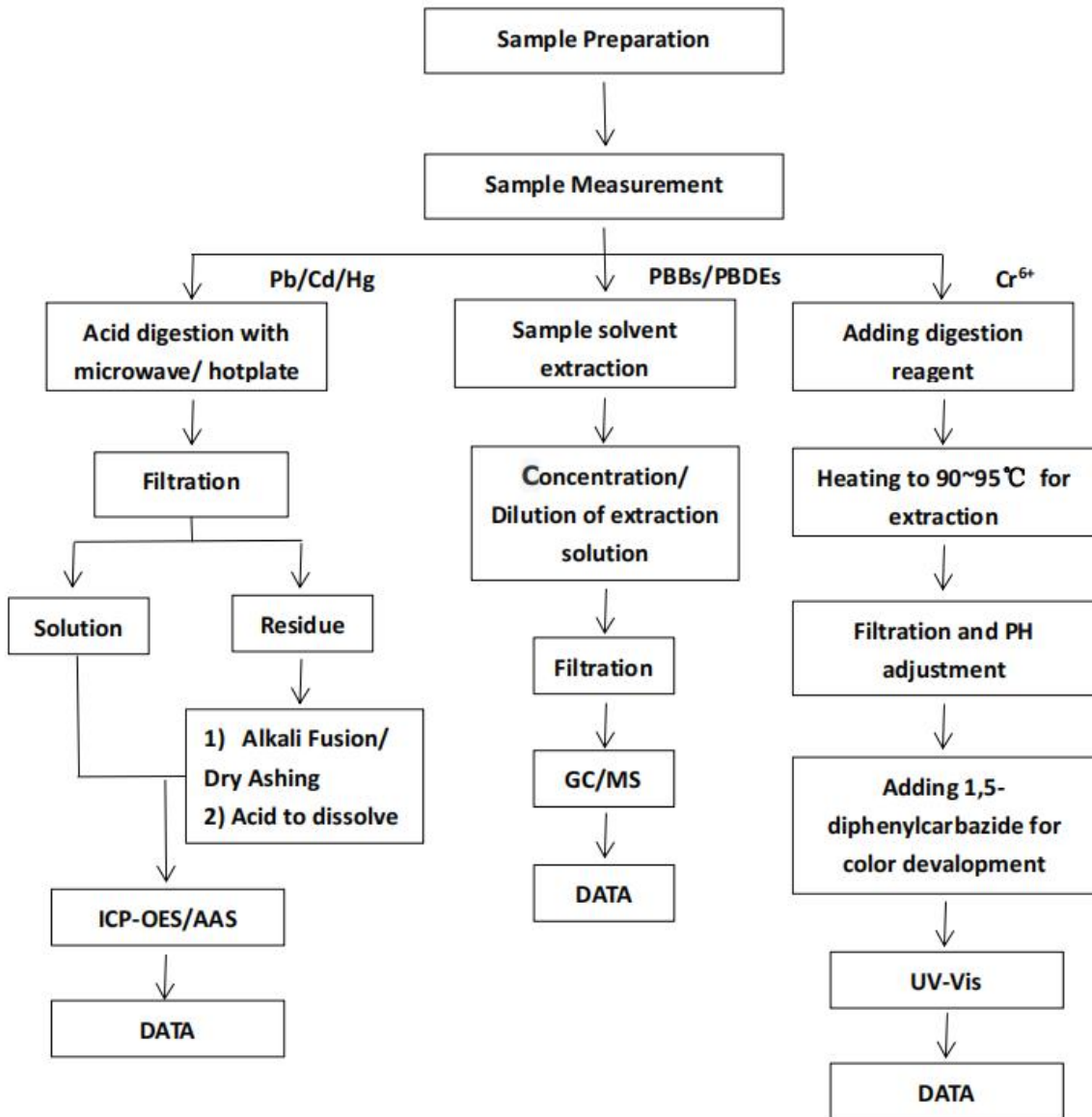
**Test Result(No.3, No.4, No.5, No.6, No.9, No.11, No.14, No.15, No.16, No.17, No.18, No.19, No.23):**

Test Item(s)	Unit	Test Method (Reference)	Result	MDL	Limit
Cadmium(Cd)	mg/kg	IEC 62321-5:2013, ICP-OES	N.D.	2	100
Lead(Pb)	mg/kg	IEC 62321-5:2013, ICP-OES	N.D.	2	1000
Mercury(Hg)	mg/kg	IEC 62321-4:2013+A1:2017, ICP-OES	N.D.	2	1000
Hexavalent Chromium(CrVI)	mg/kg	IEC 62321:2008, IEC62321-7-1:2015, IEC62321-7-2: 2017, UV-Vis	N.D.	2	1000
Sum of PBBs	mg/kg	IEC 62321-6:2015, GC-MS	--	--	--
Monobromobiphenyl	mg/kg	IEC 62321-6:2015, GC-MS	--	--	--
Dibromobiphenyl	mg/kg	IEC 62321-6:2015, GC-MS	--	--	--
Tribromobiphenyl	mg/kg	IEC 62321-6:2015, GC-MS	--	--	--
Tetrabromobiphenyl	mg/kg	IEC 62321-6:2015, GC-MS	--	--	--
Pentabromobiphenyl	mg/kg	IEC 62321-6:2015, GC-MS	--	--	--
Hexabromobiphenyl	mg/kg	IEC 62321-6:2015, GC-MS	--	--	--
Heptabromobiphenyl	mg/kg	IEC 62321-6:2015, GC-MS	--	--	--
Octabromobiphenyl	mg/kg	IEC 62321-6:2015, GC-MS	--	--	--
Nonabromobiphenyl	mg/kg	IEC 62321-6:2015, GC-MS	--	--	--
Decabromobiphenyl	mg/kg	IEC 62321-6:2015, GC-MS	--	--	--
Sum of PBDEs	mg/kg	IEC 62321-6:2015, GC-MS	--	--	--
Monobromodiphenyl ether	mg/kg	IEC 62321-6:2015, GC-MS	--	--	--
Dibromodiphenyl ether	mg/kg	IEC 62321-6:2015, GC-MS	--	--	--
Tribromodiphenyl ether	mg/kg	IEC 62321-6:2015, GC-MS	--	--	--
Tetrabromodiphenyl ether	mg/kg	IEC 62321-6:2015, GC-MS	--	--	--
Pentabromodiphenyl ether	mg/kg	IEC 62321-6:2015, GC-MS	--	--	--
Hexabromodiphenyl ether	mg/kg	IEC 62321-6:2015, GC-MS	--	--	--
Heptabromodiphenyl ether	mg/kg	IEC 62321-6:2015, GC-MS	--	--	--
Octabromodiphenyl ether	mg/kg	IEC 62321-6:2015, GC-MS	--	--	--
Nonabromodiphenyl ether	mg/kg	IEC 62321-6:2015, GC-MS	--	--	--
--Decabromodiphenyl ether	mg/kg	IEC 62321-6:2015, GC-MS	--	--	--
Dibutyl Phthalate(DBP)	mg/kg	IEC 62321-8:2017, GC-MS	--	--	--
Benzylbutyl Phthalate(BBP)	mg/kg	IEC 62321-8:2017, GC-MS	--	--	--
Di-(2-ethylhexyl) Phthalate(DEHP)	mg/kg	IEC 62321-8:2017, GC-MS	--	--	--
Diisobutyl phthalate (DIBP)	mg/kg	IEC 62321-8:2017, GC-MS	--	--	--



- Note:
- 1. mg/kg= ppm
  - 2. N.D.= No Detection(<MDL)
  - 3. MDL = Method Detection Limit
  - 4. -- = No Testing

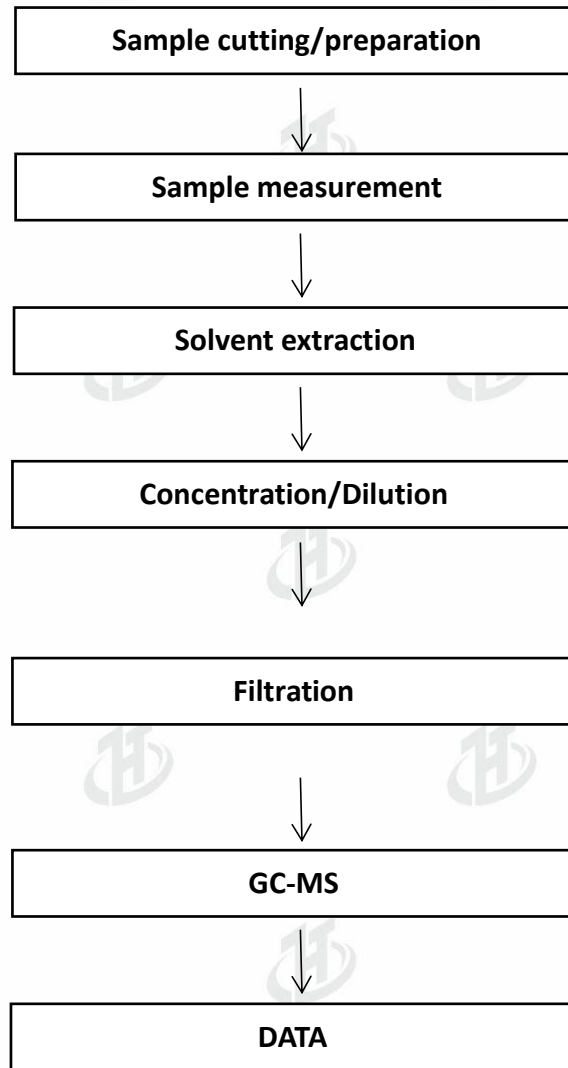
**ATTACHMENT: Cd/Pb/Hg/Cr6+/PBBs&PBDEs Flow Chart**







**ATTACHMENT: Phthalate Testing Flow Chart**





Attachment : Photo document.

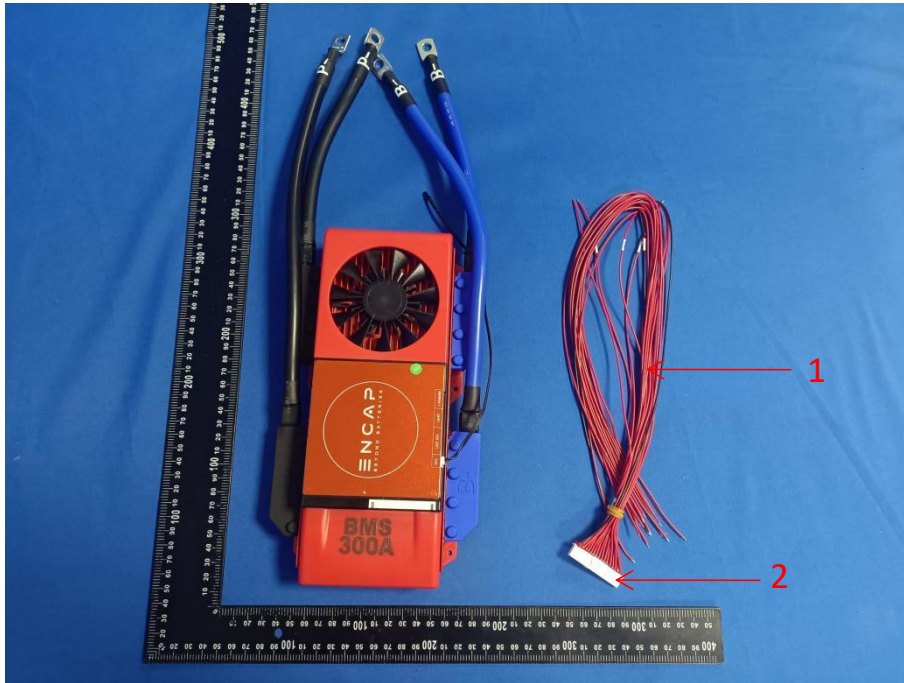


Photo 1

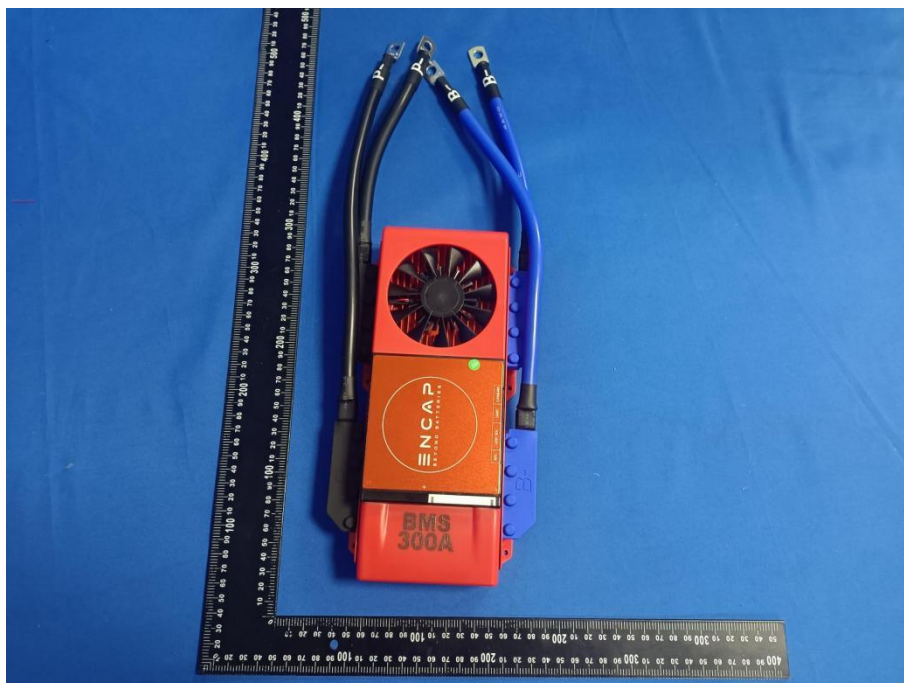


Photo 2

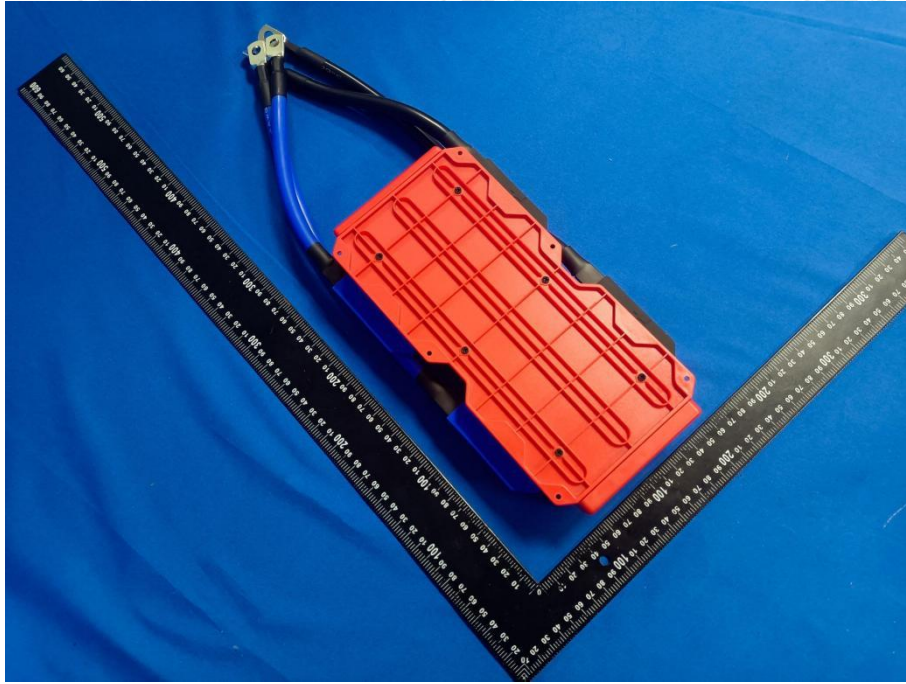


Photo 3



Photo 4



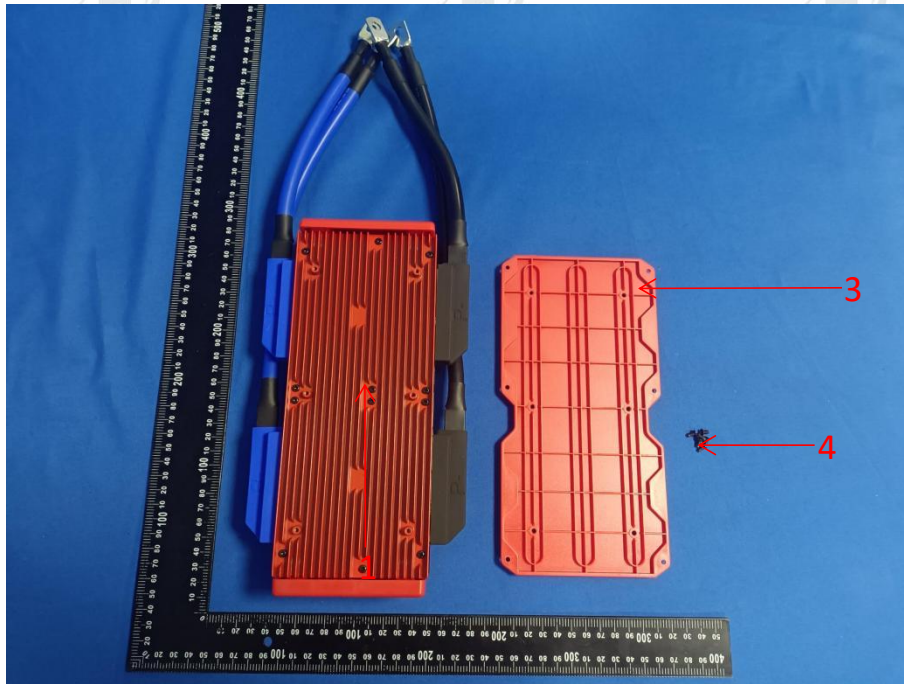


Photo 5

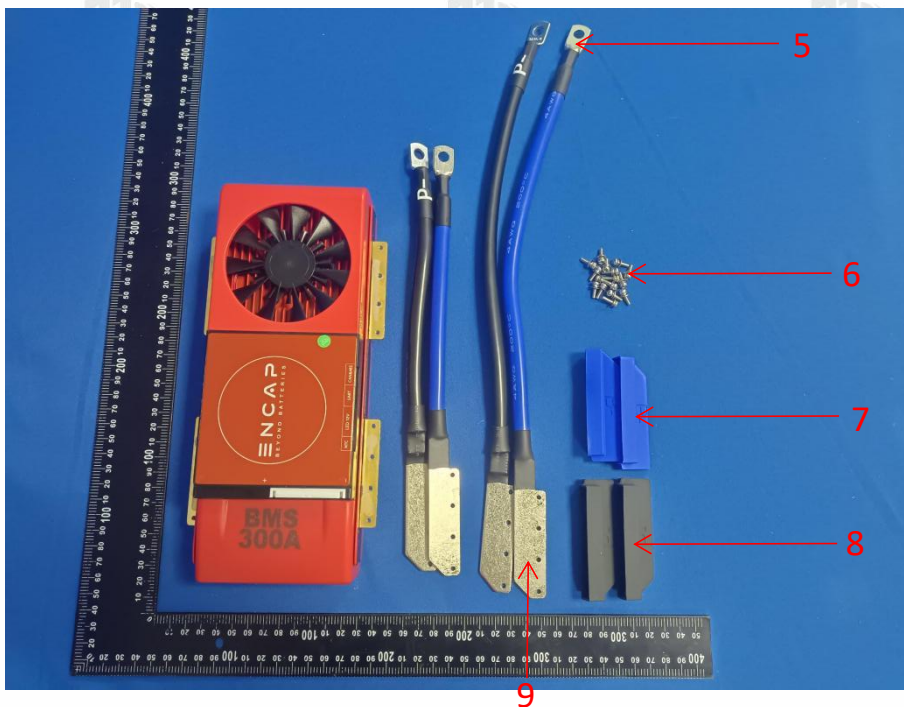


Photo 6

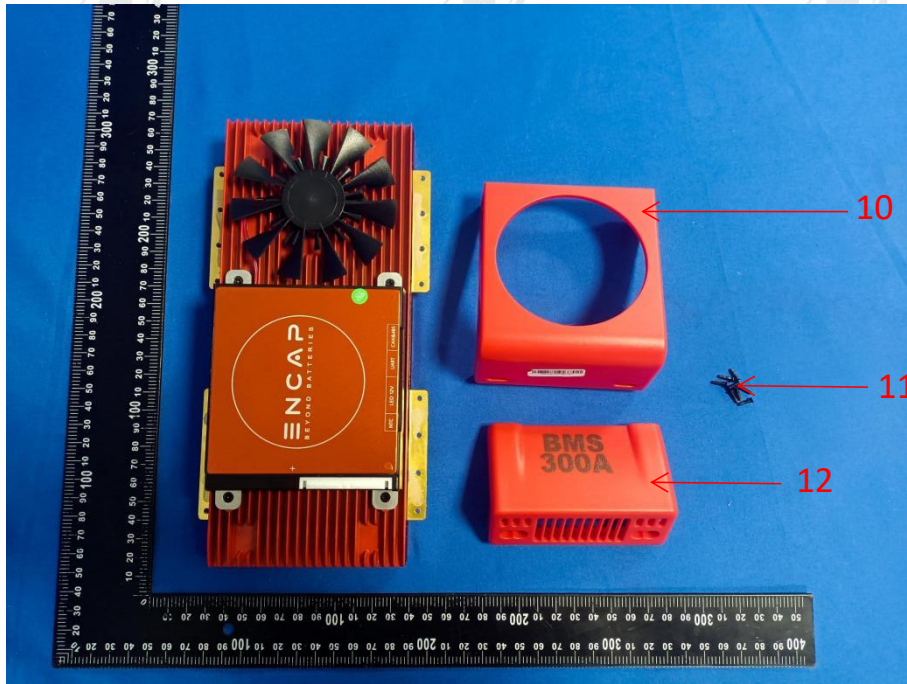


Photo 7

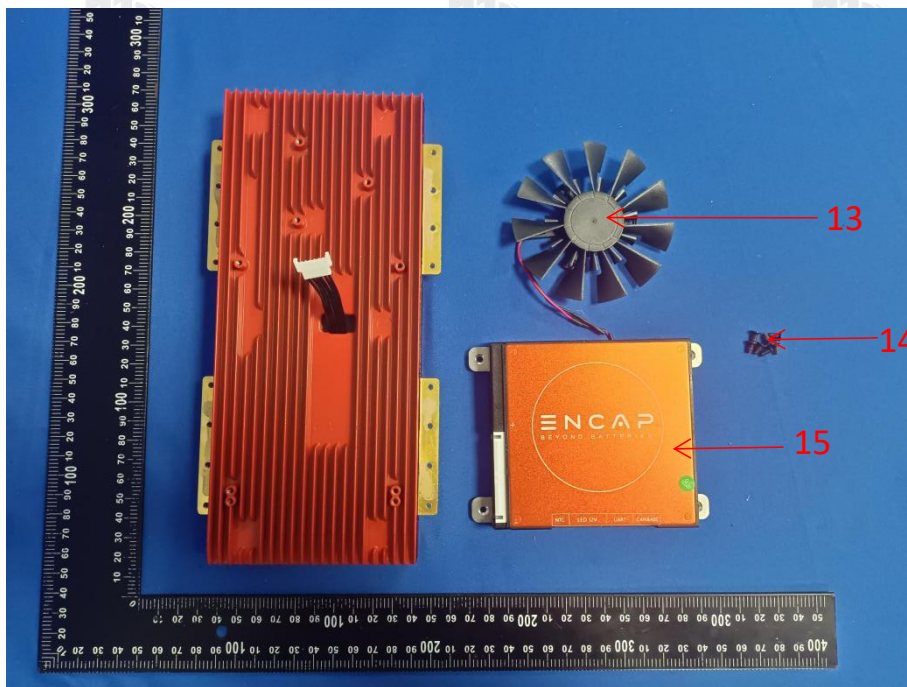


Photo 8





Photo 9

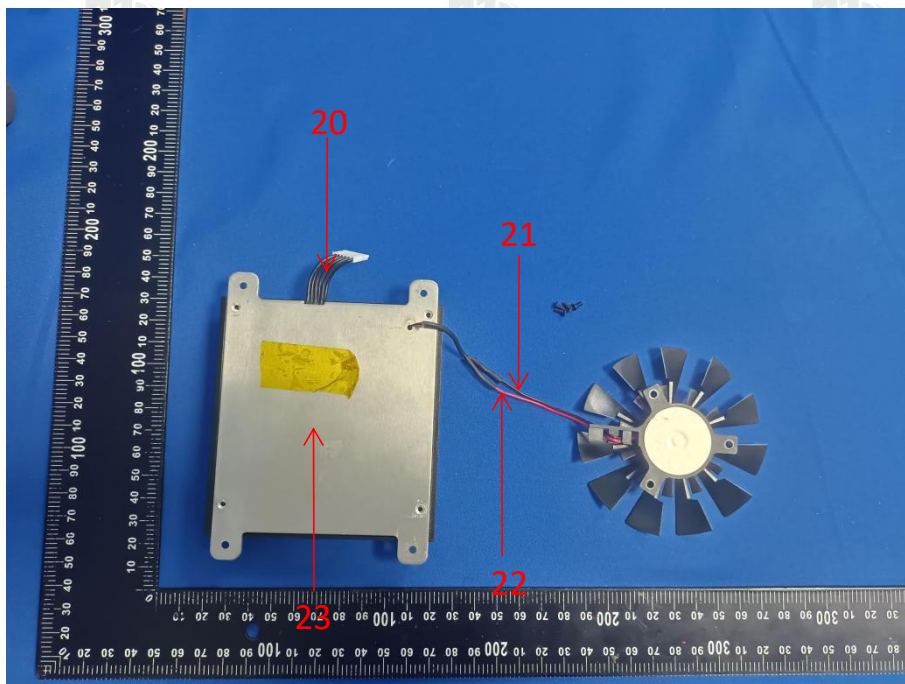


Photo 10

\*\*\*End of report\*\*\*